






SuperVault™ - the 4 hour fire rated tank

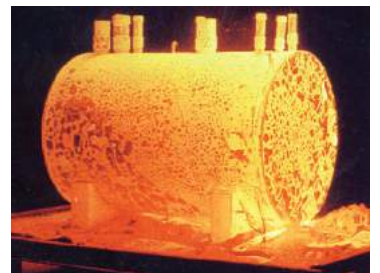
The SuperVault™ MH is the first storage system to pass the internationally recognised SwRI 95 - 03 multi hazard test, the toughest test for above ground fuel tanks. The SuperVault™ MH has been tested for multiple exposures to fire and other hazards and has passed an extended element exposure test.

This means that if the SuperVault™ MH experiences a hazard, it may be repaired, re-certified and kept in service rather than having to be replaced. This unique design provides unsurpassed fire protection making it the only storage tank to be installed in high density buildings without the need for additional bunding. The rigorously tested SuperVault™ MH is built to last.

-  The SuperVault™ cylindrical 1000 litres to 110,000 litres
-  The SuperVault™ rectangular 1000 litres to 7000 litres
-  The SuperVault™ multiple compartment of the above

Super insulation

The specially formulated insulation provides maximum thermal protection to the internal steel tank. This special insulation formula also helps guard against corrosion of the steel primary and secondary tanks. No other storage system provides a higher level of insulation and fuel security. In hot climates, the insulation also minimises fuel losses due to evaporation.



SuperVault™ undergoing the four hour fire test at 2000 °F (1093 °C)



Secondary Containment

No bunding is required for the installation of the SuperVault™. Environmental regulations have made the secondary containment as important as the primary containment. Engineered and constructed for maximum protection, the SuperVault MH outer steel tank provides secondary containment as well as protecting the insulation from the elements of nature and fire. Both the primary and secondary containment tank conforms to AS 1692 and UL-2085 requirements.

SuperVault's™ are in use world wide in locations and buildings where security, protection and environmental concerns are paramount. In government buildings, airports, hospitals, military sites, from the Arctic cold to the desert heat, the SuperVault™ is unsurpassed in it's reliability and durability.

Technical Details

Rectangular

Includes: 50 mm fill dropper, 50 mm free to air vent socket, 50mm interstitial monitor pipe, 50mm dip dropper with dipstick and cap, 3 X 50mm stub socket fittings, emergency venting, earth lugs.

Model No	Nominal Capacity Litres	Length	Diameter	Height	Weight
SVR-4999	514	1337	1068	1409	1372
SVR-1000	1031	1634	1418	1409	1955
SVR-1200	1237	1752	1518	1409	2177
SVR-2000	2062	1779	1870	1605	2882
SVR-3000	3093	2289	2018	1622	3986
SVR-4000	4124	2319	2168	1822	4638
SVR-4999	4999	2400	2218	1980	5029
SVR-6000	6186	3004	2218	1921	5981
SVR-7000	7216	3444	2218	1921	6673

Cylindrical

50 mm fill dropper, 50 mm free to air vent socket, 50mm interstitial monitor pipe, 50mm dip dropper with dipstick and cap, 3 X 50mm stub socket fittings, twin pedestals, emergency venting, earth lugs.

Model No	Nominal Capacity Litres	Length	Diameter	Height	Weight
SV1-3000	3330	3240	1534	1780	3327
SV1-5000	5600	5230	1534	1780	5062
SV2-11000	11000	6090	1916	2160	7782
SV2-15000	15000	8100	1916	2160	9920
SV3-11000	11400	4080	2300	2540	8091
SV3-20000	20900	7250	2300	2540	12833
SV3-30000	33000	11250	2300	2540	18915
SV4-34000	35000	7250	2873	3120	17199
SV4-45000	45100	9250	2873	3120	21043
SV4-55000	55100	11250	2873	3120	24852
SV4-65000	65200	13250	2873	3120	28661
SV5-60000	59650	7241	3653	3940	24970
SV5-76900	76922	9241	3653	3940	30431
SV5-94000	94194	11241	3653	3940	35899
SV5-100000	101457	12084	3653	3940	38176
SV5-110000	111466	13241	3653	3940	41330

Benefits

- Capacities from 1,000 to 110,000 litres
- Lightweight insulation which has 75% less weight than traditional concrete
- Third-party certification
- 30 year warranty
- Easy to install & relocate
- Protected with a 300 dft, 3 coat paint system, keeps the SuperVault™ looking good for years
- Internal coatings available for aviation use or potable water
- Multiple compartment configuration
- Meets current standards and regulations
- Storage of diesel, petrol, ethanol, fuel oil, methanol, bio fuels and aviation fuels
- Emergency venting for primary and secondary containment
- Interstitial monitoring capability
- Integral pedestal supports provide seismic anchoring

SuperVault Approvals & Compliance

International

- Southwest Research Institute (SwRI) 95 - 03 & 95 - 01
- Complies to UL 2085
- Complies to UL 142

New Zealand

- Complies to EPA (New Zealand) HSNO: 2004

Australia

- AS 1692: 2006
- AS 1940: 2004



5 Tanya Street Bromley
Christchurch 8062 NEW ZEALAND

Ph: +64 3 384 2380
Fax: +64 3 384 2388

Email: sales@fuelchief.co.nz

26 Saleyards Road
Parkes 2870 NSW AUSTRALIA

Ph: 1300 899 038

Visit our website: www.fuelchief.co.nz

